

## Local Companies

The library maintains files of clippings, from the Racine newspapers, for local companies. Ask at the Reference Desk for this material.

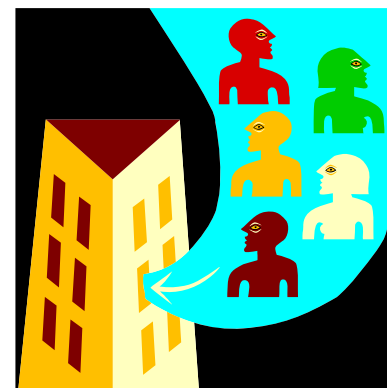
Brief information about area companies may be found in the *Harris Wisconsin Manufacturers Directory*. This directory has a section which is arranged alphabetically by city, with companies listed alphabetically by name within each city, and another section that lists companies by product. The current edition is shelved in the Job & Careers Reference Section at R/338/W753WMH. Older editions, which may be checked out, are shelved in the circulating Jobs & Careers collection at 338/W753WMH.

Some of the larger industries in Racine will be included in the sources listed in this pamphlet.

RPL 5/09

## Finding Information About Companies

This is a selection of the information that is available at the Racine Public Library.



75 Seventh Street  
Racine, WI 53403  
[www.raacinelibrary.info](http://www.raacinelibrary.info)

Adult Services	262.636.9217
Youth Services	262.636.9245
Circulation	262.636.9241
Interlibrary Loan	262.636.9299

## American Companies—General information

The following directories give very limited, basic information about a variety of companies. At a minimum, they provide addresses and phone numbers. Many also include the company's product or service, as well as company officers. Sometimes they include the annual sales, year established, and number of employees.

If the call number indicates "Business Reference," it is referring to the directory stacks located east of the Reference Desk.

Ask at Reference Desk R/602.75/B734  
***Brands and their Companies***

Reference R/338.8025/L591  
***LexisNexis Corporate Affiliations***

Jobs & Careers Reference R/338.74/H769  
***Hoover's Handbook of American Business***

www.hoovers.com  
***Hoover's Online***

Basic corporate information and basic industry overviews are available free on this web site.

www.racinelibrary.info  
***Reference USA*** (a web-based database)  
Click on "Finding Information". Click on "Reference USA" link on the left hand side of the screen. You will need a Racine Public Library card to access this source.

## American Companies—Detailed Corporate Information

The following sources provide more in-depth financial and historical information about a limited number of companies.

<http://www.prars.com>  
***Annual reports from public companies***

www.badgerlink.net  
***BadgerLink***

This URL works if you have an Internet Service Provider (ISP) that is registered with the Wisconsin Department of Public Instruction (DPI). If you use a national ISP, such as AOL, or a Wisconsin ISP that has not registered with DPI, and you have a Racine Public Library card, go to the library's web site ([www.racinelib.lib.wi.us](http://www.racinelib.lib.wi.us)). On the "Finding Information" page, click on the "Magazine and Newspapers" link on the left side of the screen. BadgerLink for links that will let you use your library card for authentication. These will provide access to the Ebscohost and ProQuest databases.

The **Ebscohost databases** include magazine indexes and many full-text articles about business topics and companies. The Corporate ResourceNet database also includes profiles of American and foreign companies.

**ProQuest** provides indexing and full-text articles from newspapers.

Ask at Reference Desk R/332.6327/M828  
***Morningstar Mutual Funds***

www.sec.gov/edgarhp.htm  
***SEC reports for public companies***

Ask at Reference Desk R/332/V249V  
***Value Line Investment Survey***

Ask at Reference Desk R/332/V249vue  
***Value Line Investment Survey***  
***(Small and Mid-cap edition)***

Many companies have web sites. You can often find them by typing the company name in a search engine such as Google ([www.google.com](http://www.google.com))

## Information About Foreign Companies

Reference R/338.8025/L591  
***LexisNexis Corporate Affiliations***

Company profiles for many foreign companies are included in the **Ebscohost Corporate ResourceNet** database that is part of BadgerLink (see inside).

Many companies have web sites. You can often find them by typing the company name in a search engine such as Google ([www.google.com](http://www.google.com)).